



*Fordingley Road, London, W9 3HE*  
*Asking Price £560,000 Leasehold*







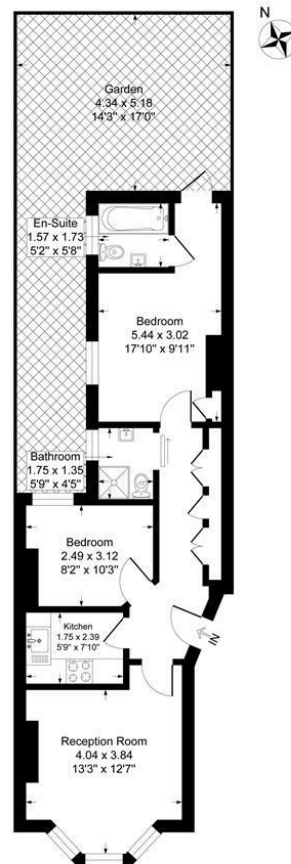


2 x  2 x  1 x 

A bright, un-modernised two bedroom garden flat on the ground floor of Portnall Road situated in a Victorian terrace. The 605sq ft flat has potential to extend into the side return and re-configure. The flat is arranged as a reception to the front of the building with a separate kitchen, and two bedrooms to the rear, including a master bedroom measuring 17'10" ft x 9'11"ft with ensuite bathroom and a door leading to the patio garden. Also benefitting from a second double bedroom, and separate shower room. Share of Freehold. Located in Maida Vale close to the green spaces of Paddington Recreation Grounds and the shops on Elgin Avenue and Maida Vale tube.



Fordingley Road, London, W9  
Approximate Gross Internal Floor Area = 56.2 sq m / 605 sq ft



Ground Floor

Illustration for identification purposes only, measurements are approximate, not to scale.

**Important Notice** Debussy Property Service Ltd trading as Braithwait for themselves and for the vendor of this property whose agents they are, give notice that (i) these particulars do not constitute any part of an offer or contract, (ii) all statements contained within these particulars are made without responsibility on the part of Braithwait or the vendor, (iii) whilst none in good faith, none of the statements contained within these particulars are to be relied upon as a statement of representation or fact, (iv) any intending purchaser must satisfy him/herself by inspection or otherwise as to the correctness of each of the statements contained within these particulars, (v) the vendor does not make or give either Braithwait or any person within their employment any authority to make or give any representation or warranty whatsoever in relation to this property. Wide angled lenses may be used in photographs.

Call us on 0207 289 8889 or email [sales@braithwait.co.uk](mailto:sales@braithwait.co.uk)

B  
BRAITHWAIT